



# Iowa Ag News – Cattle on Feed

Iowa Field Office · 210 Walnut Street Ste 833 · Des Moines IA 50309 · (515) 284-4340 · (800) 772-0825  
fax (515) 284-4342 or (800) 719-1794 · [www.nass.usda.gov/ia](http://www.nass.usda.gov/ia)

Cooperating with the Iowa Department of Agriculture and Land Stewardship

April 19, 2013

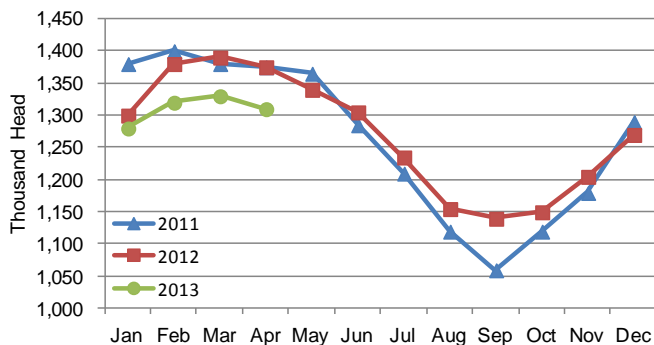
Media Contact: Greg Thessen

**Cattle and calves on feed** for slaughter market in Iowa for all feedlots totaled 1,310,000 on April 1, 2013 according to the USDA, National Agricultural Statistics Service, Iowa Field Office. The inventory is down 2 percent from March 1, 2013 and down 5 percent from April 1, 2012. Feedlots with a capacity greater than 1,000 head had 630,000 head on feed, down 2 percent from last month and down 6 percent from last year. Feedlots with a capacity less than 1,000 head had 680,000 head on feed, down 1 percent from last month and down 4 percent from last year.

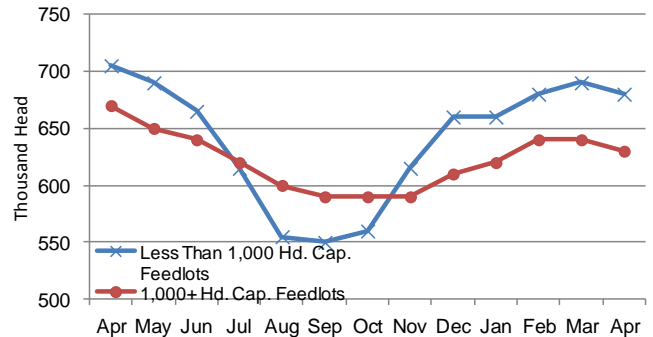
**Placements** during March totaled 131,000 head, an decrease of 6 percent from last month and down 2 percent from last year. Feedlots with a capacity greater than 1,000 head placed 71,000 head, unchanged from last month but down 3 percent from last year. Feedlots with a capacity less than 1,000 head placed 60,000 head. This is down 13 percent from last month but unchanged from last year.

**Marketings** for March were 145,000 head, up 18 percent from last month and up 1 percent from last year. Feedlots with a capacity greater than 1,000 head marketed 77,000 head, up 13 percent from last month and up 8 percent from last year. Feedlots with a capacity less than 1,000 head marketed 68,000 head, up 24 percent from last month but down 7 percent from last year. **Other disappearance** totaled 6,000 head.

**Cattle on Feed, Inventory on all Feedlots, Iowa: 2011-2013**



**Cattle on Feed, Inventory by Feedlot Capacity, Iowa: Past 12 Months**



## All Cattle on Feed, Iowa

Item	Lots 1,000+ Head (1,000 Head)	Lots Less than 1,000 Head (1,000 Head)	All Lots (1,000 Head)
Cattle on Feed, March 1, 2013 .....	640	690	1,330
March Placements .....	71	60	131
March Marketings .....	77	68	145
March Other Disappearance .....	4	2	6
Cattle on Feed, April 1, 2013 .....	630	680	1310

## Cattle on Feed: Number on Feed, Placements, Marketings, and Other Disappearance by Month, 1,000+ Capacity Feedlots

[Cattle and calves on feed are animals for slaughter market being fed a ration of grain or other concentrates and are expected to produce a carcass that will grade select or better.]

State	Cattle on Feed April 1			Placements during March			Marketings during March			March Disappearance other than Slaughter <sup>1</sup>		
	2012	2013	'13 as % of '12	2012	2013	'13 as % of '12	2012	2013	'13 as % of '12	2012	2013	'13 as % of '12
	(1,000 Head)	(1,000 Head)	(Percent)	(1,000 Head)	(1,000 Head)	(Percent)	(1,000 Head)	(1,000 Head)	(Percent)	(1,000 Head)	(1,000 Head)	(Percent)
Arizona .....	278	278	100	27	32	119	27	23	85	1	1	100
California .....	490	480	98	53	56	106	61	53	87	2	3	150
Colorado .....	1,070	980	92	160	165	103	175	165	94	5	10	200
Idaho .....	225	215	96	34	26	76	38	35	92	1	1	100
<b>Iowa .....</b>	<b>670</b>	<b>630</b>	<b>94</b>	<b>73</b>	<b>71</b>	<b>97</b>	<b>71</b>	<b>77</b>	<b>108</b>	<b>2</b>	<b>4</b>	<b>200</b>
Kansas .....	2,170	2,090	96	375	425	113	395	360	91	10	25	250
Nebraska .....	2,530	2,420	96	440	400	91	460	400	87	20	10	50
Oklahoma .....	320	305	95	56	55	98	74	53	72	2	2	100
South Dakota ..	255	230	90	45	32	71	48	31	65	2	1	50
Texas .....	2,780	2,590	93	430	540	126	470	485	103	20	15	75
Washington .....	233	233	100	37	37	100	36	36	100	1	1	100
Other States ....	461	458	99	62	60	97	63	53	84	3	3	100
United States ..	11,482	10,909	95	1,792	1,899	106	1,918	1,771	92	69	76	110

(D) Withheld to avoid disclosing data for individual operations.

<sup>1</sup> Includes death loss, movement from feedlots to pasture, and shipments to other feedlots for further feeding.

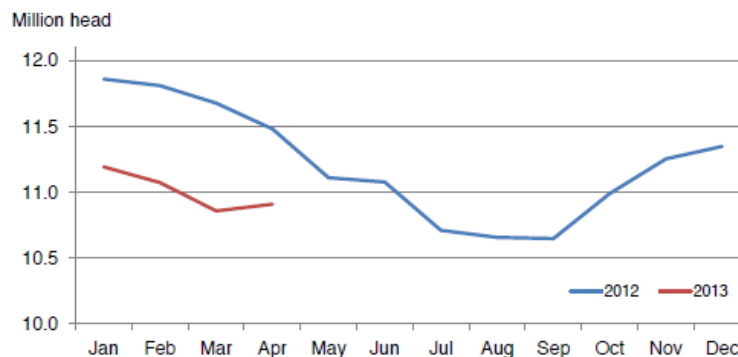
## United States Cattle on Feed

Cattle and calves on feed for slaughter market in the United States for feedlots with capacity of 1,000 or more head totaled 10.9 million head on April 1, 2013. The inventory was 5 percent below April 1, 2012. The inventory included 6.91 million steers and steer calves, down 4 percent from the previous year. This group accounted for 63 percent of the total inventory. Heifers and heifer calves accounted for 3.93 million head, down 8 percent from 2012.

Placements in feedlots during March totaled 1.90 million, 6 percent above 2012. Net placements were 1.82 million head. During March, placements of cattle and calves weighing less than 600 pounds were 410,000, 600-699 pounds were 315,000, 700-799 pounds were 540,000, and 800 pounds and greater were 634,000.

Marketings of fed cattle during March totaled 1.77 million, 8 percent below 2012. Other disappearance totaled 76,000 during March, 10 percent above 2012.

**Cattle on Feed Inventory on 1,000+ Capacity Feedlots – United States**



The complete report can be found under **Publications** on the USDA NASS website at [www.nass.usda.gov](http://www.nass.usda.gov).